

CERTIFIED LAND CORNER RECORDATION

DESCRIPTION OF CORNER EVIDENCE FOUND, AND ORIGINAL RECORD (If known)

Sandstone 36x24x6 called for by GLO set 16.1 chains North of the center line of UPRR (Set October 1870)

DESCRIPTION OF MONUMENT AND ACCESSORIES ESTABLISHED
TO PERPETUATE THE ORIGINAL LOCATION OF THIS CORNER:

Set 3½ aluminum cap on south side of stone as shown in picture.

SKETCH, WITH COURSE AND DISTANCE TO ADJACENT CORNER IF DETERMINED IN THIS SURVEY.
(May Sketch or Paste Reproduction on Reverse Side.)

See diagram on other side.



3 1/4" Aluminium Cap

I, Larry T. Perry, C.S. certify that I have carefully performed or reviewed the work done on the diagrammed corner as reported on this recordation form and approve the same.

Larry T. Perry L.S. 3047
Signature of Surveyor Registration No.

STATE OF WYOMING,

Office of Clerk and Recorder,

County of Saramit

797640

This "corner record" was filed for record on the _____ day of _____, 19____, was noted on the cross-index plat and is assigned page No. _____, in book No. _____.

7-13

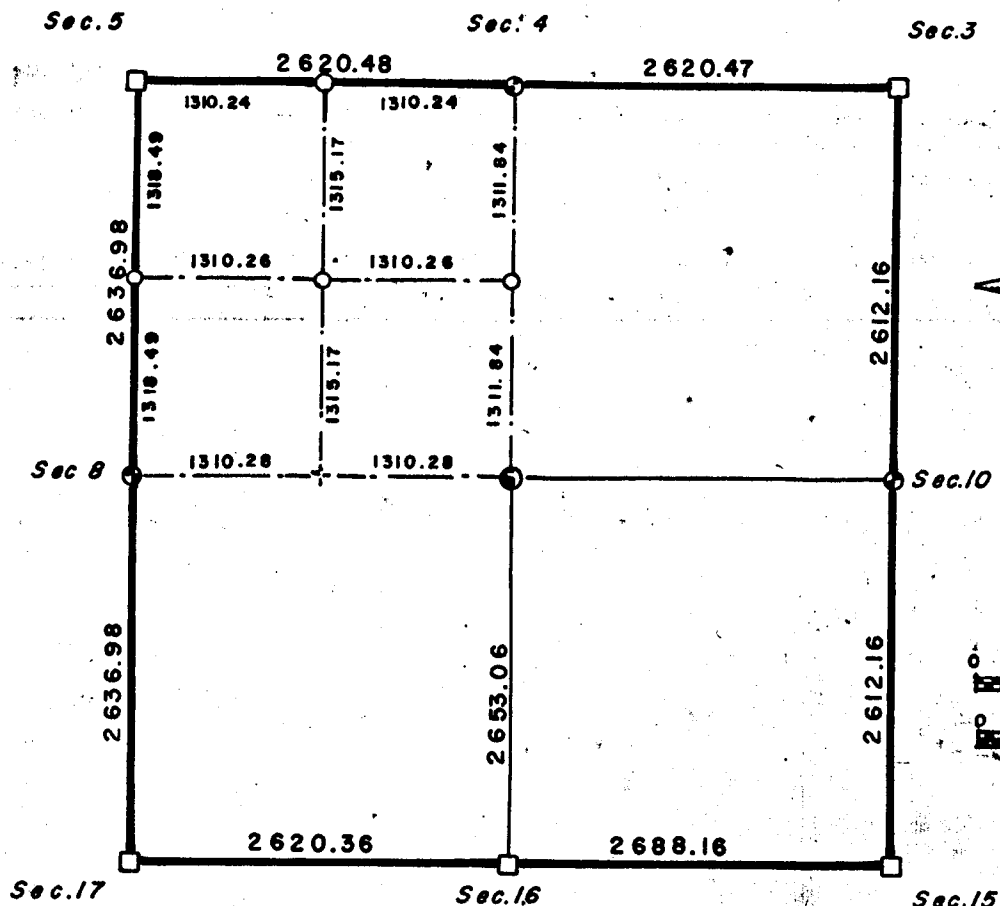
13-69

[illegible]

Section 9

T.13 N., R.69 W., 6th T.13 N.

LARAMIE COUNTY, WYOMING



LEGEND

- Stone found
- Aluminum cap set, No stone found, 1/4 corner
- Center of Section, Aluminum cap set
- Aluminum cap set, 1/16 corner
- + Nail set, 1/16

State of Wyoming } ss
County of Laramie }

CERTIFICATE of SURVEY

I, Larry T. Perry, a licensed surveyor in the State of Wyoming do hereby certify and declare that this drawing was prepared from field notes of a survey performed by me during the month of June 1985 A.D. and that it represents the corners as found and set. The 1/4 corners set where established in accordance with the BLM manual after a diligent search for the original stone monuments as set by the G.L.O. in the year of 1870.

Larry T. Perry L.S.
Larry T. Perry, L.S.
Wyoming L.S. 3047